

ES1AW THRU ES1JW

Features

- Easy pick and place
- For surface mounted applications
- Low profile package
- Built-in strain relief
- Superfast recovery times for high efficiency

Mechanical Data

- Case:SOD-123FL
- Terminals: Solderable per MIL-STD-750, Method 2026
- Approx.Weight: 15mg 0.00053oz



Simplified outline SOD-123FL and symbol

Pinning

PIN	DESCRIPTION
1	Cathode
2	Anode

Absolute Maximum Ratings And Characteristics

Ratings at 25°C ambient temperature unless otherwise specified.

Single phase, half wave, 60 Hz, resistive or inductive load. For capacitive load, derate current by 20%.

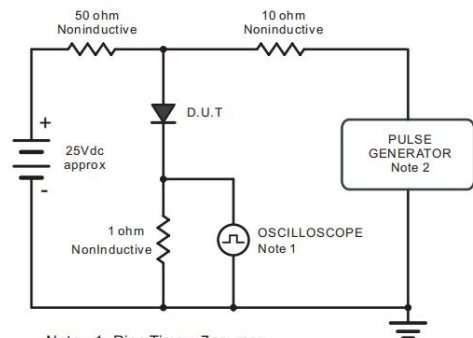
Parameter	Symbols	ES1AW	ES1BW	ES1CW	ES1DW	ES1EW	ES1GW	ES1JW	Units
Maximum Repetitive Peak Reverse Voltage	V _{RRM}	50	100	150	200	300	400	600	V
Maximum RMS voltage	V _{RMS}	35	70	105	140	210	280	420	V
Maximum DC Blocking Voltage	V _{DC}	50	100	150	200	300	400	600	V
Maximum Average Forward Rectified Current	I _{F(AV)}	1							A
Peak Forward Surge Current 8.3 ms Single Half Sine Wave Superimposed on Rated Load (JEDEC Method)	I _{FSM}	30							A
Maximum Forward Voltage at 1 A	V _F	1.0				1.25		1.68	V
Maximum DC Reverse Current Ta = 25° C at Rated DC Blocking Voltage Ta =125° C	I _R	5 100							μ A
Typical Junction Capacitance at VR=4V, f=1MHz	Cj	15							pF
Maximum Reverse Recovery Time ⁽¹⁾	t _{rr}	35							ns
Typical Thermal Resistance ⁽²⁾	RθJA	85							°C/W
Operating and Storage Temperature Range	T _J , T _{stg}	-55 ~ +150							°C

(1) Measured with $I_F = 0.5\text{A}$, $I_R = 1\text{A}$, $I_{rr} = 0.25\text{A}$

(2) P.C.B. mounted with 2.0" X 2.0" (5 X 5 cm) copper pad areas

Rating And Characteristic Curves

Fig.1 Reverse Recovery Time Characteristic And Test Circuit Diagram



Note: 1. Rise Time = 7ns, max.
Input Impedance = 1megohm, 22pF.
2. Rise Time = 10ns, max.
Source Impedance = 50 ohms.

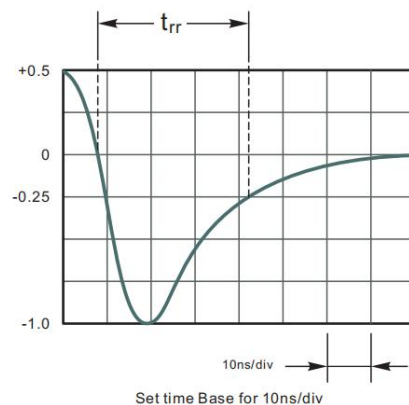


Fig.2 Maximum Average Forward Current Rating

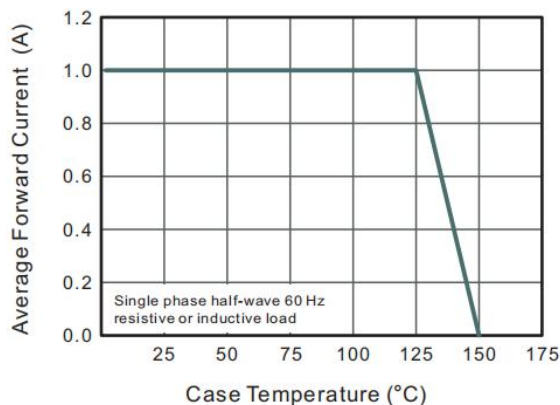


Fig.3 Typical Reverse Characteristics

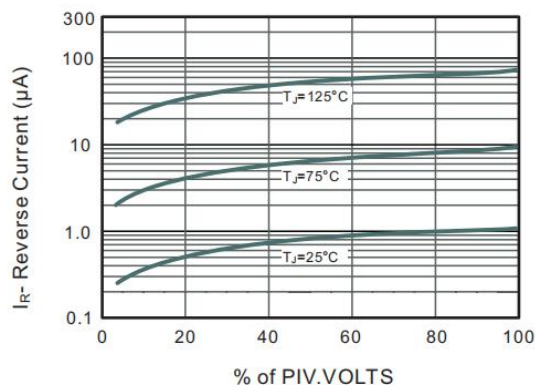


Fig.4 Typical Forward Characteristics

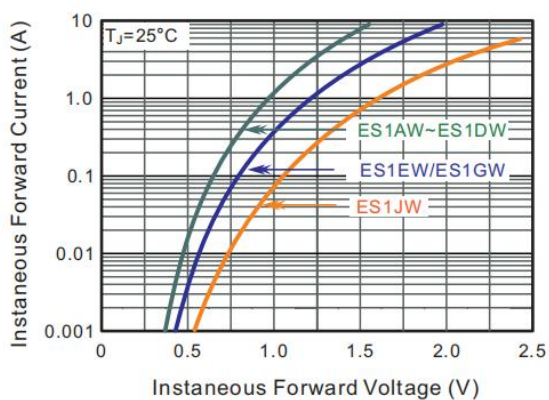


Fig.5 Typical Junction Capacitance

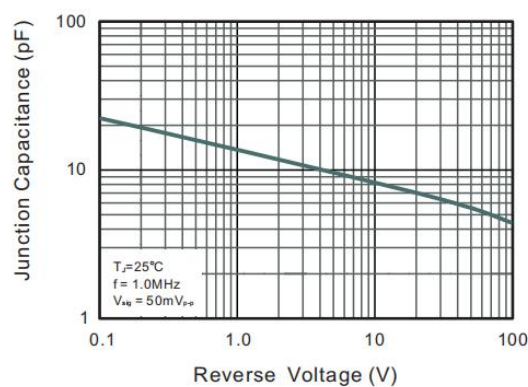
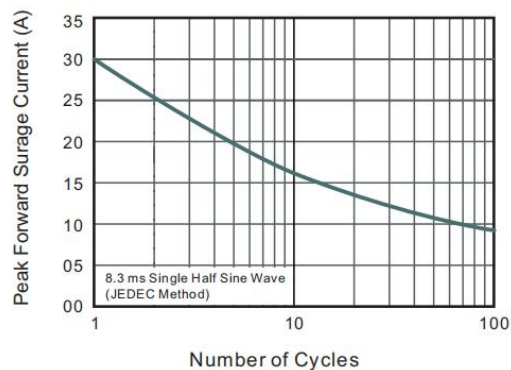


Fig.6 Maximum Non-Repetitive Peak

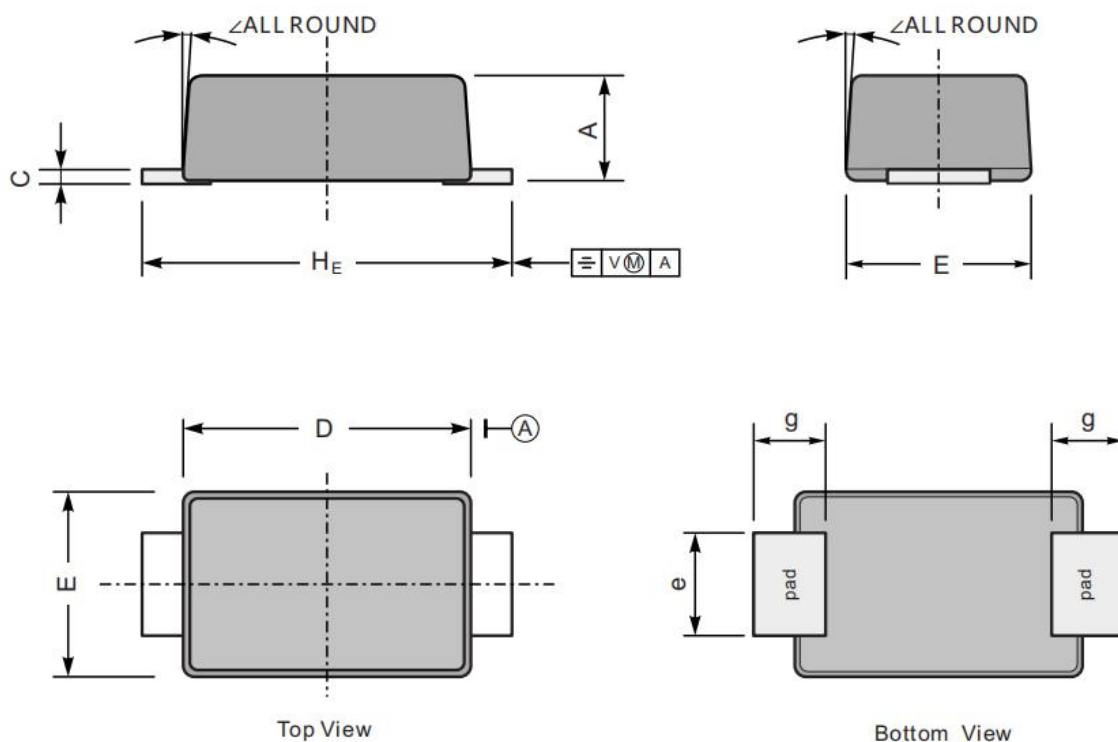
Forward Surge Current



Package Outline

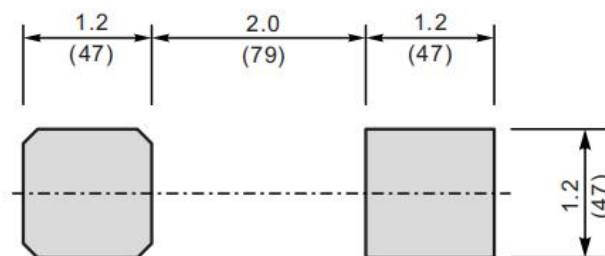
Plastic surface mounted package; 2 leads

SOD-123FL



UNIT		A	C	D	E	e	g	H _E	∠
mm	max	1.1	0.20	2.9	1.9	1.1	0.9	3.8	7°
	min	0.9	0.12	2.6	1.7	0.8	0.7	3.5	
mil	max	43	7.9	114	75	43	35	150	
	min	35	4.7	102	67	31	28	138	

The recommended mounting pad size


Unit: $\frac{\text{mm}}{(\text{mil})}$